

C-more Version 2.1 Release Notes

Revision 2

July 3, 2008

Revision Notes:

Revision 1.1	1) Added Known Issues 6, 7, 8, 9 and 10 2) Added "Important" Note to the <i>Event Manager Export</i> topic on page 12.	May 28, 2008
Revision 2.0	1) Added Known Issues 11 thru 18	July 3, 2008

Overview	4
New PLC Drivers.....	4
New Features and Improvements.....	4
<i>Recovery Tool</i>	<i>6</i>
<i>Read From Panel added to File Drop Down Menu.....</i>	<i>7</i>
<i>A-B SLC and MicroLogix selection added to in Tag Name Database Import.....</i>	<i>9</i>
<i>Alias Tag importing for ControlLogix added to Tag Database Import.....</i>	<i>10</i>
<i>Event Manager Import/Export feature added.....</i>	<i>14</i>
<i>Reduce Project Size when using bitmaps less than 65535 colors (16 bit color) ..</i>	<i>15</i>
<i>Project Memory Tool Added.....</i>	<i>17</i>
<i>Disable Exponent Notation Added.....</i>	<i>19</i>
<i>Font Selection for Tick Numbers and Axes Added.....</i>	<i>21</i>
<i>Slider Object Scaling Added</i>	<i>22</i>
<i>Analog Meter – Position and Angle Entries Added.....</i>	<i>23</i>
<i>Line Trend Graph – Pens can used Mixed Data Types</i>	<i>24</i>
<i>Email Server Port Number Settings Added.....</i>	<i>25</i>
<i>Web Server Port Number Setting Added.....</i>	<i>26</i>
<i>Key Button Object – Notification and Visibility Added</i>	<i>27</i>
<i>Increment/Decrement Value Object – Range Checking Added</i>	<i>28</i>
<i>String Data Type Increased from 81 characters to 128 characters</i>	<i>29</i>
<i>Object List Window – Library Tab – Importing graphics and sounds</i>	<i>30</i>
Known Issues	31

Overview

These Release Notes provide:

1. Instructions for using New Features and Improvements in this release of the C-more Programming Software that have not been incorporated into the Help Files. These will be added to the Help files with the next release of the software. Also check our website at <http://support.automationdirect.com/products/cmoredirect.html> for the latest C-more Programming Software release and the latest help file.
2. A list of known issues that will be fixed in future releases.

For a complete list of **fixed bugs**, please refer to the readme.txt document included in your installation folder, typically C:\Program Files\AutomationDirect\C-more.

New PLC Drivers

Detailed instructions for setting up the drivers are contained in the C-more Help Files under PLC Setup.

- i. Omron CS/CJ FINS Ethernet
- ii. Siemens S7-300 Ethernet (ISO over TCP/IP)
- iii. Siemens S7-200 PPI Serial

New Features and Improvements

Recovery Tool

If the panel power is interrupted during a firmware update, the firmware and/or Operating system in the panel may become corrupt. The panel may be recoverable depending on its date of manufacture.

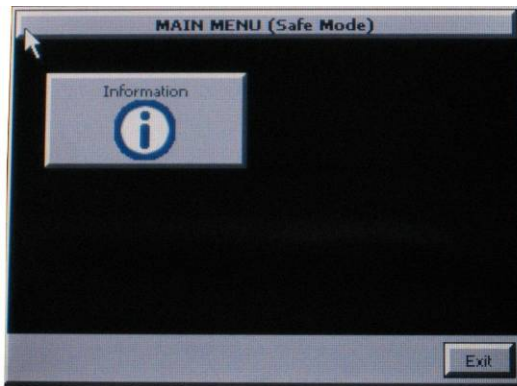
Before December 2007

For panels manufactured with a date code before 712B (Dec. 2007), there is no way to recover from a corrupt Operating system or Firmware installation. If the Operating System or Firmware is corrupted, the screen on the panel will be white when it is powered-up. The panel must be returned for a replacement.

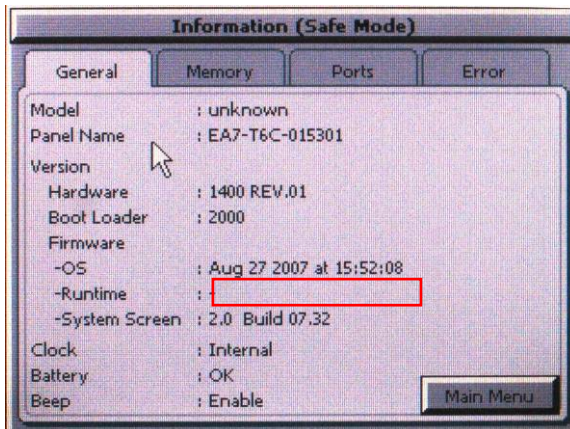
December 2007 and Later

Firmware Recovery

If the firmware is corrupt, but the Operating System is still intact, the screen below will open when power is reapplied to the panel. Pressing the Information button, will display the next screen.



Notice that the Runtime is blank



To recover, simply start the firmware update again taking care to insure a constant clean power supply.

Operating System Recovery

If the Operating System is corrupt, the screen will be white when power is reapplied to the panel. The panel will not operate at all, and the CPU LED on the back of the panel may be blinking RED.

To recover the panel's Operating system:

- 1) Connect the Panel to your PC with the USB programming cable. (Any standard USB printer cable will also work.)

- 2) Close the C-more Programming software.
- 3) Cycle the power on the panel.
- 4) On the Windows XP Start Menu select:

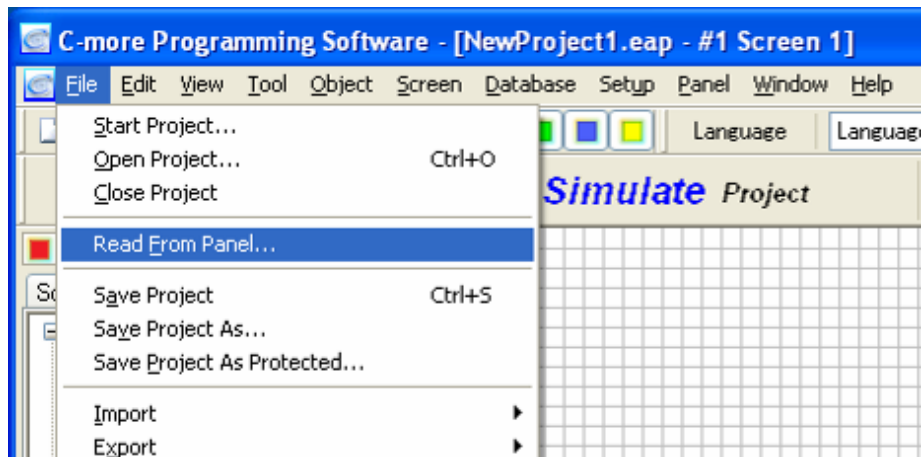
All Programs > AutomationDirect > C-more > Special Tools > Recovery Tool

The window below will open.

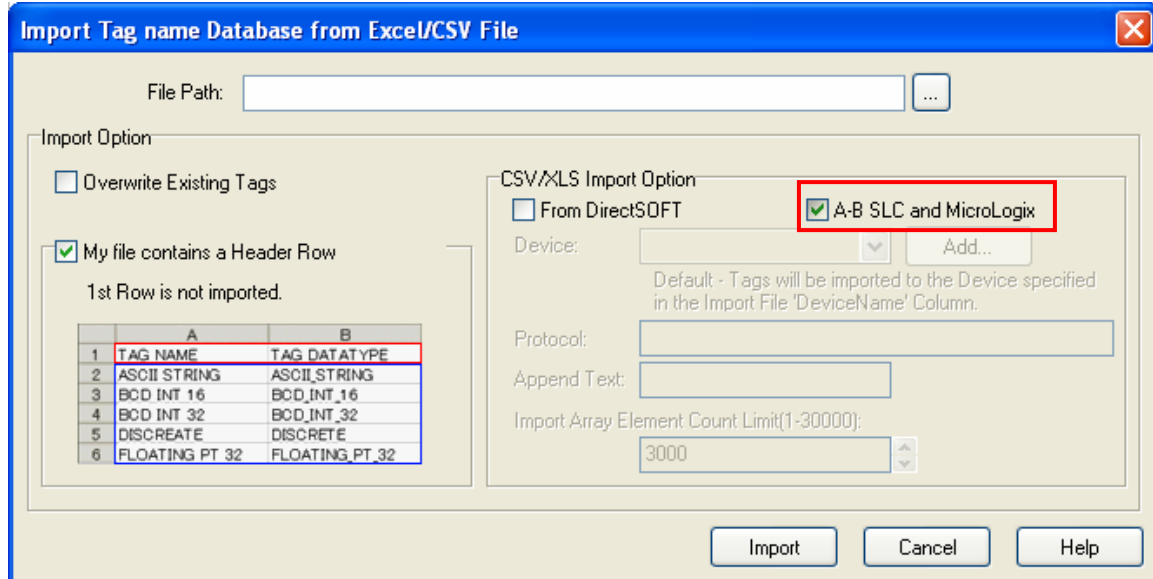


- 5) Select Start and the Operating System will be loaded to the panel.

Read From Panel added to File Drop Down Menu



A-B SLC and MicroLogix selection added to the Tag Name Database Import.



When A-B SLC and MicroLogix is selected, the import function looks for the CSV file to be in the format as it would be exported from Rockwell Software RSLogix500 programming software.

Data Types

The following Data File types can be imported:

B	-Binary
T	-Timer
C	-Counter
R	-Control
N	-Integer
F	-Floating Point

Note: I, O, S, ST and L are not imported

Timers, Counters and Control Registers

Only the following elements of the Timer, Counter and Control Data Files are imported:

TIMER – EN, TT, DN, ACC, PRE

-If ACC or PRE are not designated in the import file, the import will default to ACC

COUNTER – DN, CU, CD, OV, UN, ACC, PRE

-If ACC or PRE are not designated in the import file, the import will default to ACC

CONTROL – EN, DN, EU, EM, ER, UL, IN, FD, LEN, POS

C-more Tag Name Determination

When imported, the C-more Tag Name will be determined by the following priority. If the higher priority is blank, the next priority will be used

1. A-B Symbol
2. Description Lines 1 through 5
3. PLC Address

Alias Tag importing for ControlLogix added to Tag Database Import

Import Tag name Database from Excel/CSV File

File Path: *.l5k

Import Option

☒ Overwrite Existing Tags

☐ My file contains a Header Row
All rows are imported.

L5K Import Option

Device: Add...

Protocol:

Append Text:

Import Array Element Count Limit(1-30000): 3000

Alias Option

☒ Do not import Aliases

☐ Import all Aliases & Tags

☐ Import only Aliases

☐ Import Aliases & Tags that do not have Aliases

Import Cancel Help

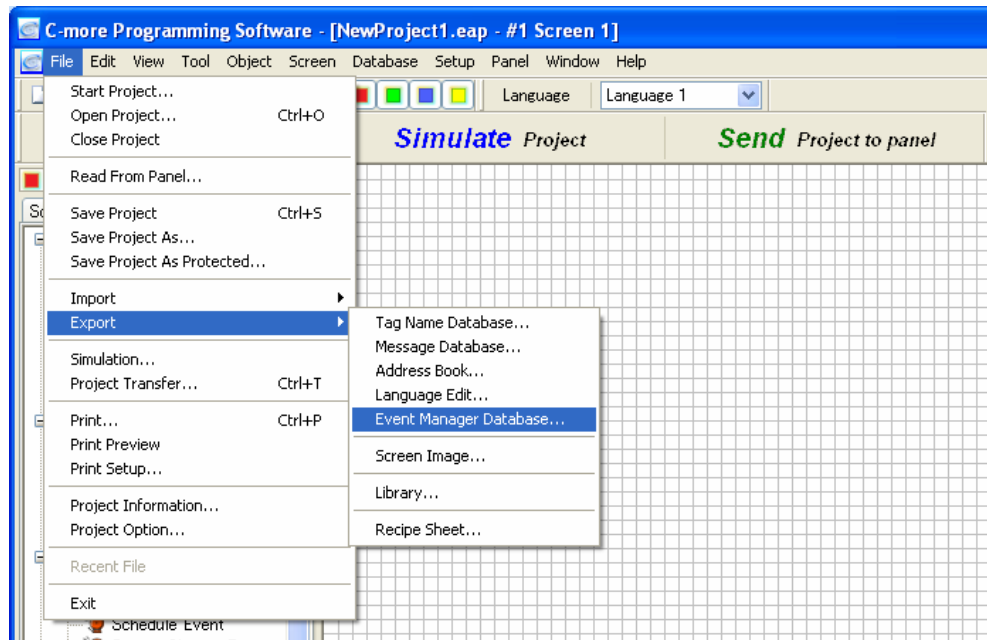
ControlLogix Tag Name Import Options

- i. Do not import Aliases
 - Will not import any aliases, only regular Tags.
- ii. Import all Aliases & Tags
 - Will import all Aliases & Tags
- iii. Import only Aliases
 - Will not import regular Tags, only Aliases
- iv. Import Aliases & Tags that do not have Aliases
 - Will import all Aliases and only Tags that do not have Aliases assigned to them.

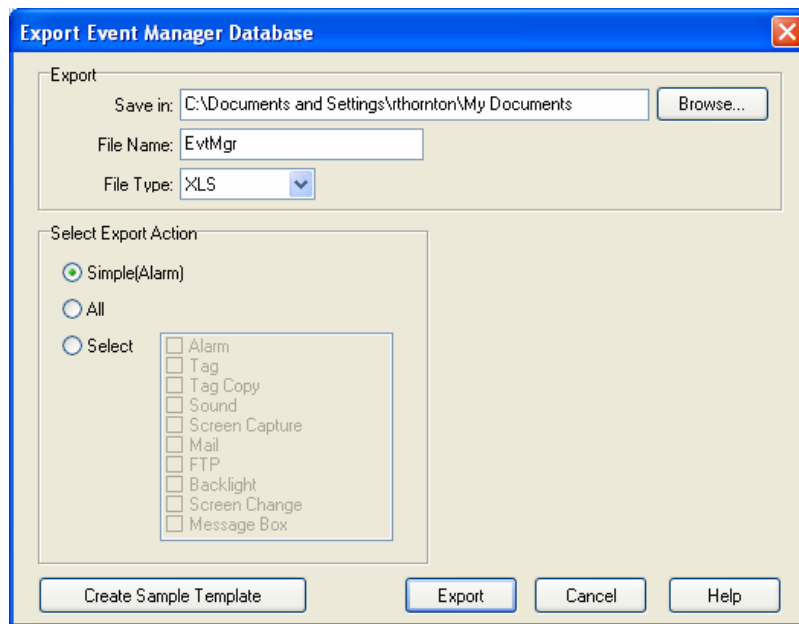
Event Manager Import/Export feature added

Exporting

- a. To access the Event Manager Export, go to the drop down File Menu, select Export and select Event Manager Database...



- b. The Export Event Manager Database window shown below will open.



- c. Select Browse Button and navigate to the folder in which the file will be saved.
- d. Enter a desired File Name
- e. File Type – the only file type available is the .xls Microsoft Windows Excel® spreadsheet format.
- f. Select the Export Action
- g. Select Export

Simple (Alarm)

Selecting *Simple* only exports the Alarm actions in a simple format to expedite the export and import of large numbers of alarms. This is meant to emulate the simple Alarm Database provided in other panels. Along with the Import function alarms can be quickly added and edited using Microsoft Windows Excel® or equivalent spreadsheet software.

All

Selecting *All* exports all Event Manager Actions. This file format is quite complicated because of the many different actions and options in each action. It is recommended that each Action be exported by selecting them individually with the *Select* option below.

Select

To limit the actions exported, choose *Select* then choose the type of Action(s) to export. Because the actions vary greatly, it is recommended that each Action be exported and imported separately.

Editing Exported Data

Many of the fields exported can be edited and then imported. Events can even be added by adding them in the exported file than imported.

Care should be taken when editing the exported file. Many of the fields require a strict syntax for time, data, embedded data, file names...etc. Fields such as these should be edited in the Event Manager Database to insure proper syntax in applied and no errors occur when importing.

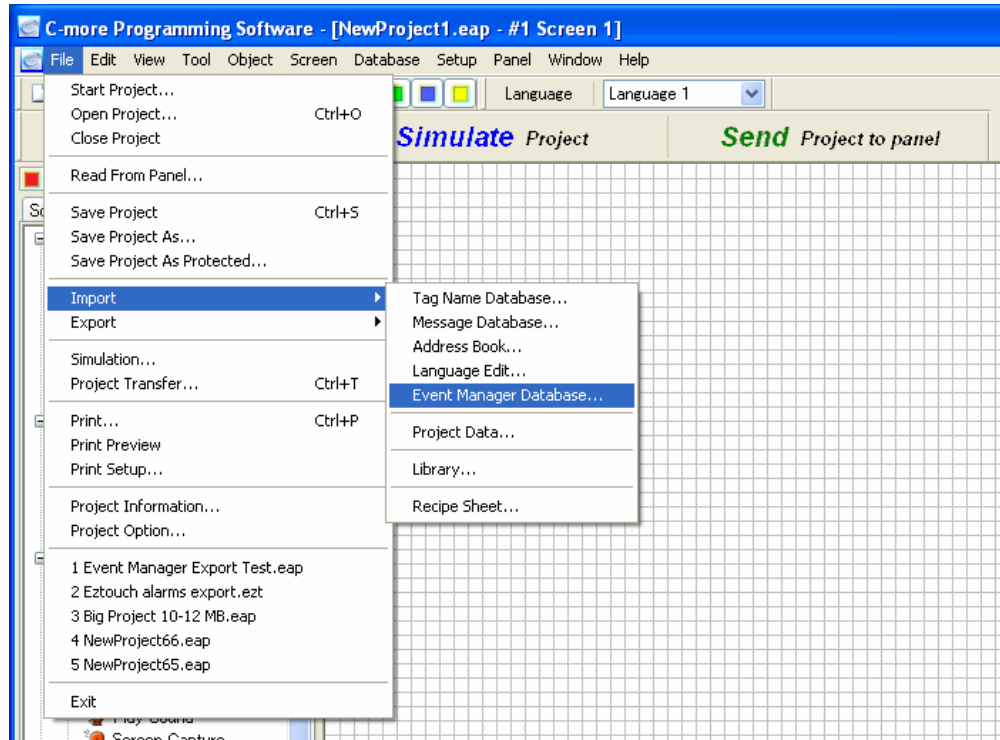
Note: Tag Names entered into the spreadsheet must already exist in the C-more Project or they will not import correctly.

Important!

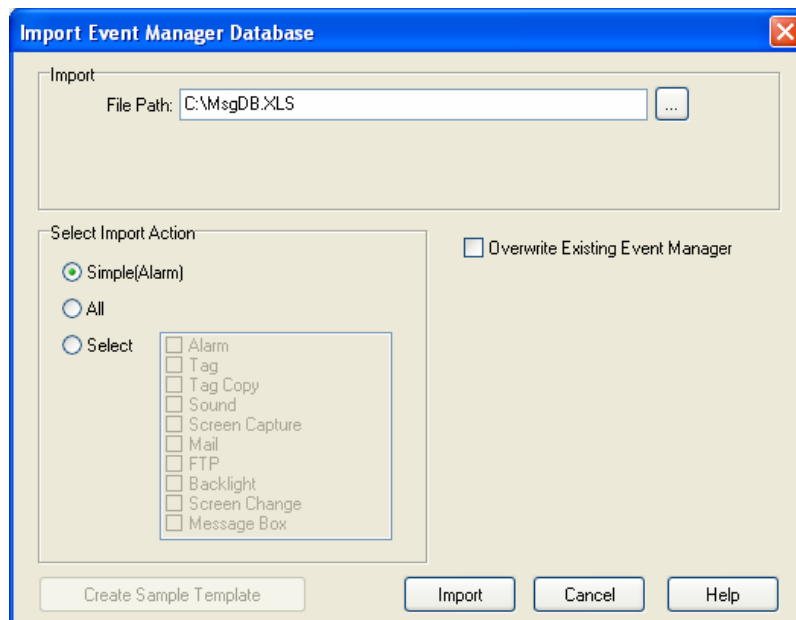
When adding lines to the exported spreadsheet, Rows should be “Inserted” before the “End of Record”. Do not modify, cut and paste or attempt to change the “End of Record”. The Import will not work as expected if the “End of Record” is modified.

Importing

- a. To access the Event Manager Import, go to the drop down File Menu, select Import and select Event Manager Database...



- b. The Import Event Manager Database window shown below will open.



- c. Select Browse Button and navigate to the folder and file to import. The file type should be a Microsoft Windows Excel® format spreadsheet.
- d. Select the Import Action
- e. Select whether to overwrite the existing Events and Actions
- f. Select Import

Simple (Alarm)

Selecting *Simple* will only import data formatted as determined by the Simple (Alarm) Action Export.

Note: If you select a file that is not in the *Simple* format, the import will generate an error: **Error GUI-185: Import File is already opened or corrupted. Please check the file and import again.** You will continue getting this error until the import widow is closed and then reopen.

All

Selecting *All* imports all Event Manager Actions contained in the spreadsheet file formatted as generated by the Export All or Export Select options. . It is recommended that each Action be exported by selecting them individually with the *Select* option below.

Select

To limit the actions imported, choose *Select* then choose the type of Action(s) to import. This will import Event Manager Actions contained in the spreadsheet file formatted as generated by the Export All or Export Select options.

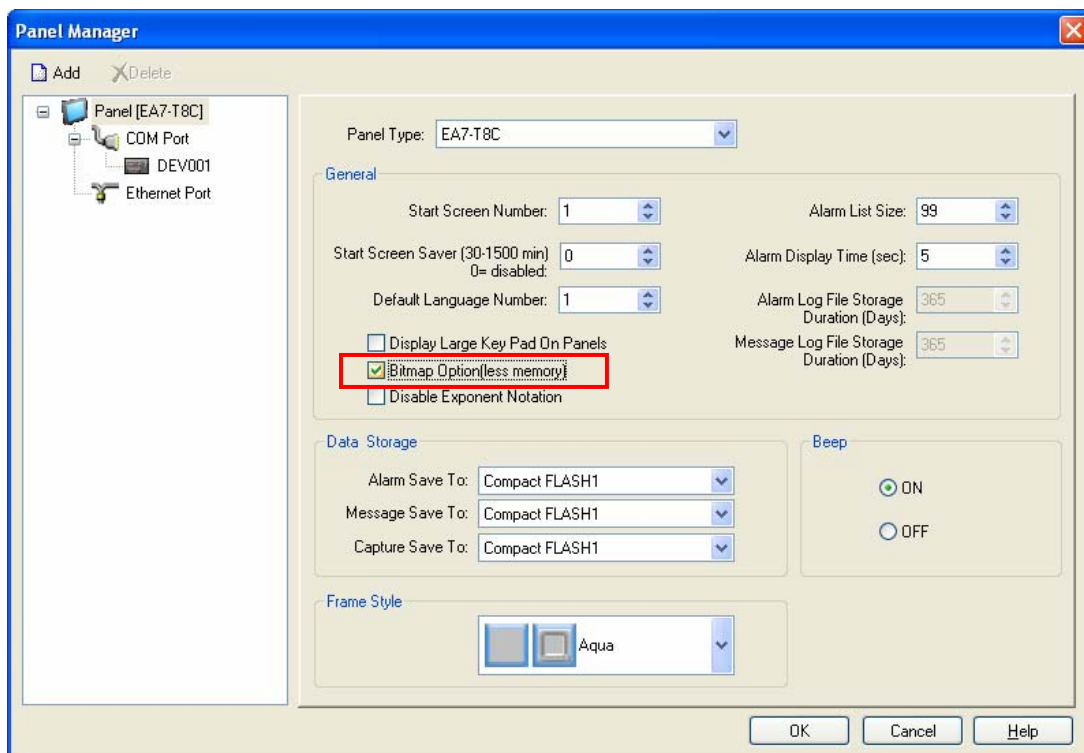
Note: If you select an action that is not contained in the file, the import will generate an error: **Error GUI-185: Import File is already opened or corrupted. Please check the file and import again.** You will continue getting this error until the import widow is closed and then reopen.

Reduce Project Size when using bitmaps less than 65535 colors (16-bit color)

When using bitmaps in various objects such as the Multi-State Bitmap or Static Bitmap Objects the project size can become very large exceeding the allowed project memory size. To reduce project size, bitmaps using less than 65535 colors should be used such as 8-bit or 4-bit bitmaps. These bitmaps do not require as much memory.

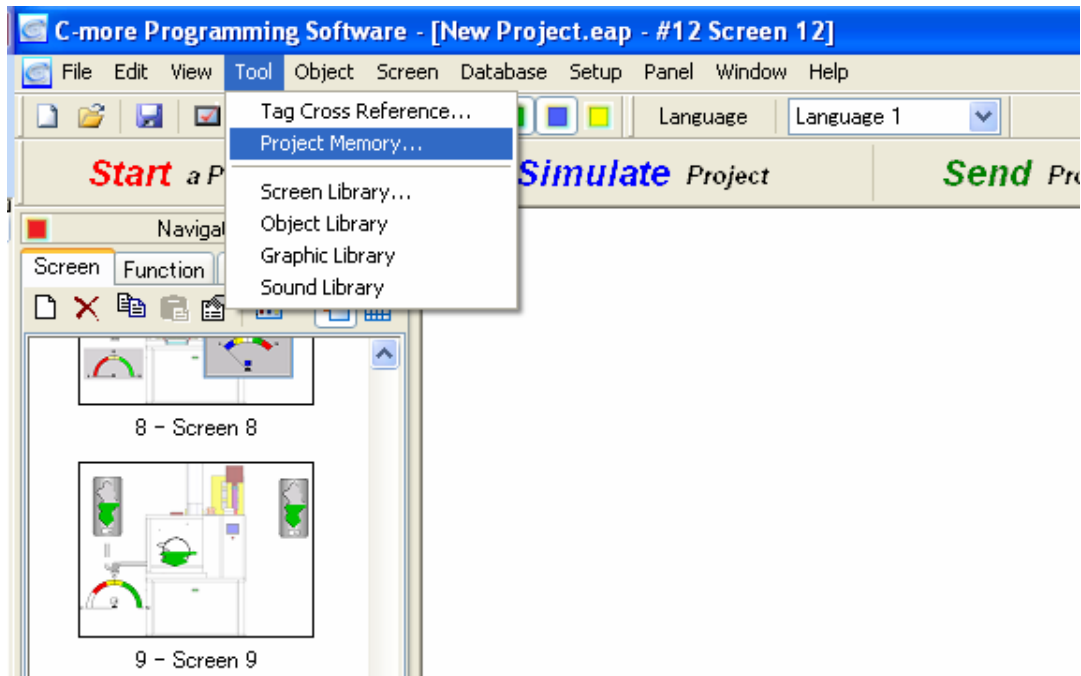
In order to take advantage of the smaller bitmaps, the Bitmap Option in the Panel Manager should be selected as shown below.

Note: Selecting the bitmap option may reduce the performance of the panel. A balance will have to be determined between project size and panel performance.



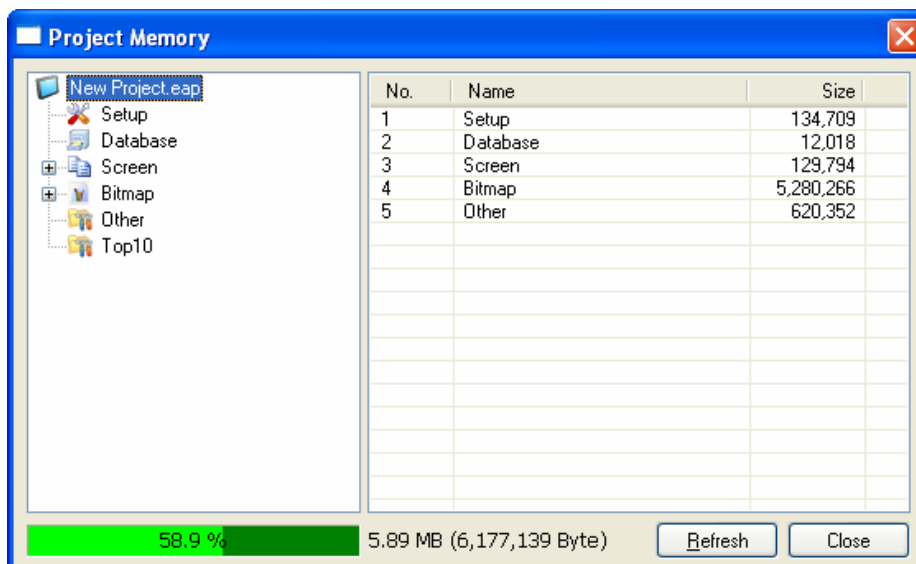
Project Memory Tool Added

To open the **Project Memory Tool** select the *Tool* drop down menu and select *Project Memory...*



Project Memory Window

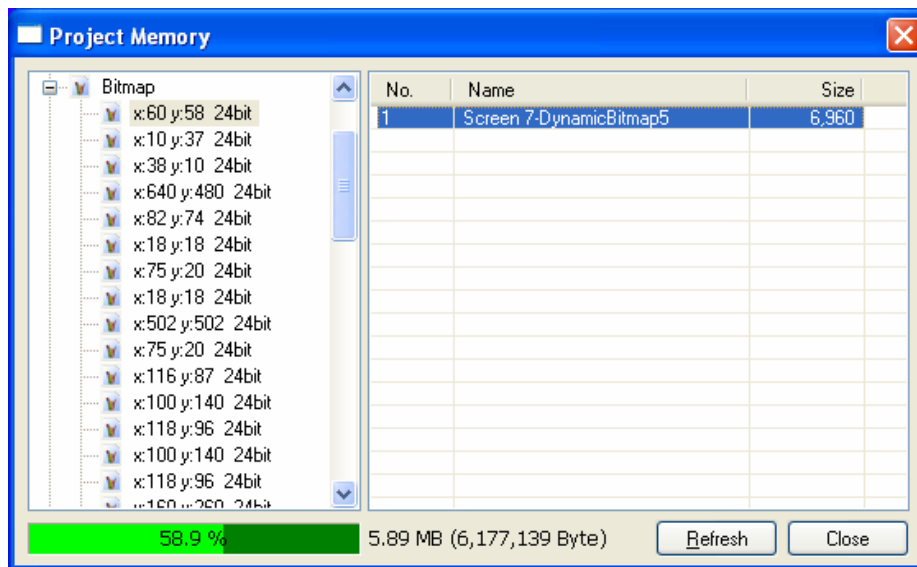
The project Memory Tool allows the user to determine what Screens, Objects, Bitmaps or other features are consuming the most memory in the project. The **Top 10** selection shows the 10 top users of project memory.



When expanded, the Bitmap selection in the tree in the right pane will list the different size and bit colors used in the project, for example below, there is only one bitmap that is x75 y20 24bit. It is located on Screen 7 and is used in Dynamic Bitmap5 and is 6,960 Bytes.

Locating the Screen and Object

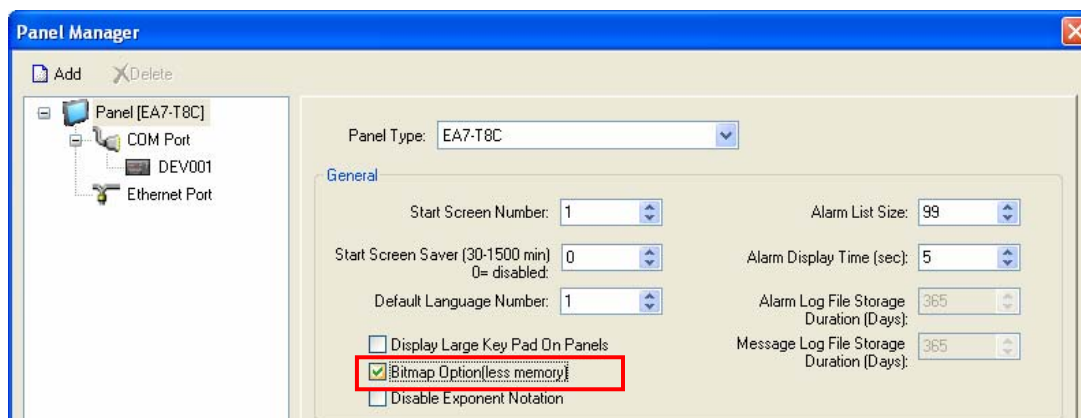
To locate the screen and object containing the bitmap or other object, double click on line in the right pane. In the example below double click on “Screen 7-Dynamic Bitmap5” and Screen 7 will open and the object will be highlighted on the screen.



Reducing project memory

If bitmaps less than 16-bit are used, the project size can be reduced by selecting **Bitmap Option (less Memory)** in the **Panel Manager** as shown below.

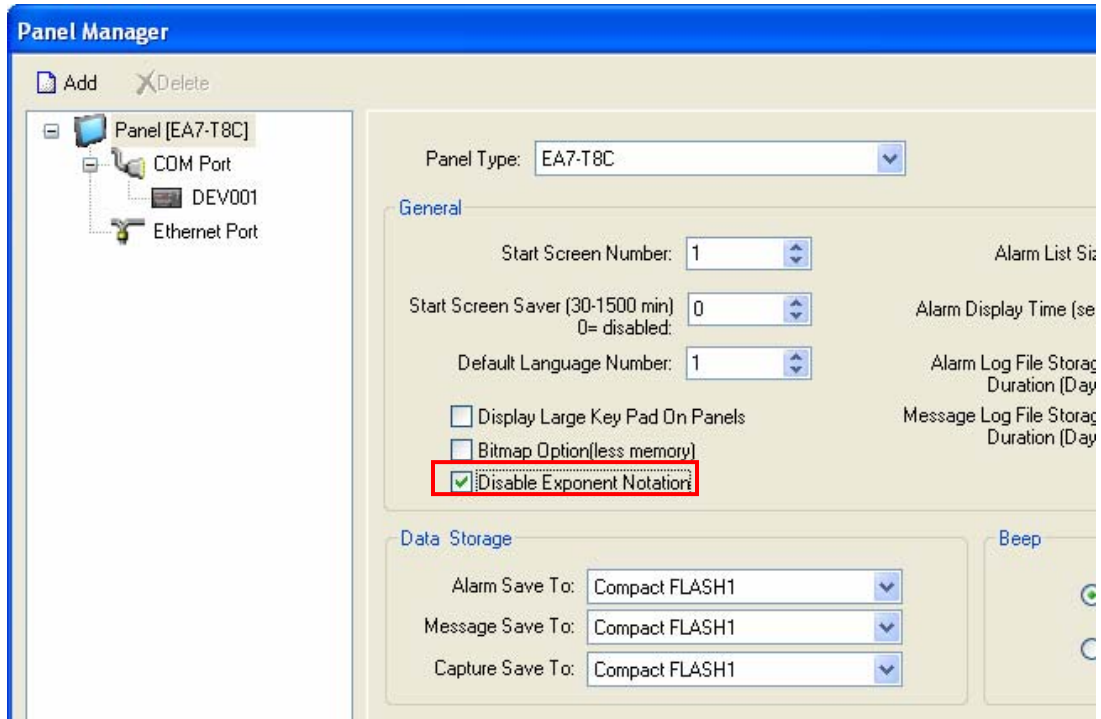
Note: This will not reduce the project size where all of the bitmaps used in the project are 16-bit or higher.



Disable Exponent Notation Added

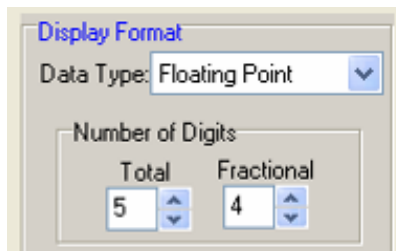
When using the Floating Point Data Type with the Numeric Entry, Numeric Display, Slide, Analog Meter, Bar Meter, Line Trend Graph, PID Faceplate Bar Meter, PID Faceplate Trend graph and objects with embedded numeric data sometimes the exponent notation can hinder viewing the data.

To disable Exponent Notation, open the Panel Manager and select the Disable Exponent Notation check box as shown below.

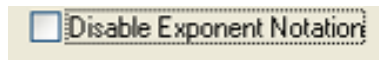


Example:

A Numeric Entry Object is configured with 5 Total Digits and 4 Fractions Digits as shown below.



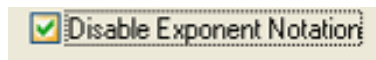
With the Exponent Notation enabled:



Entering a value 0.00006 will be displayed as shown.



With the Exponent Notation disabled:



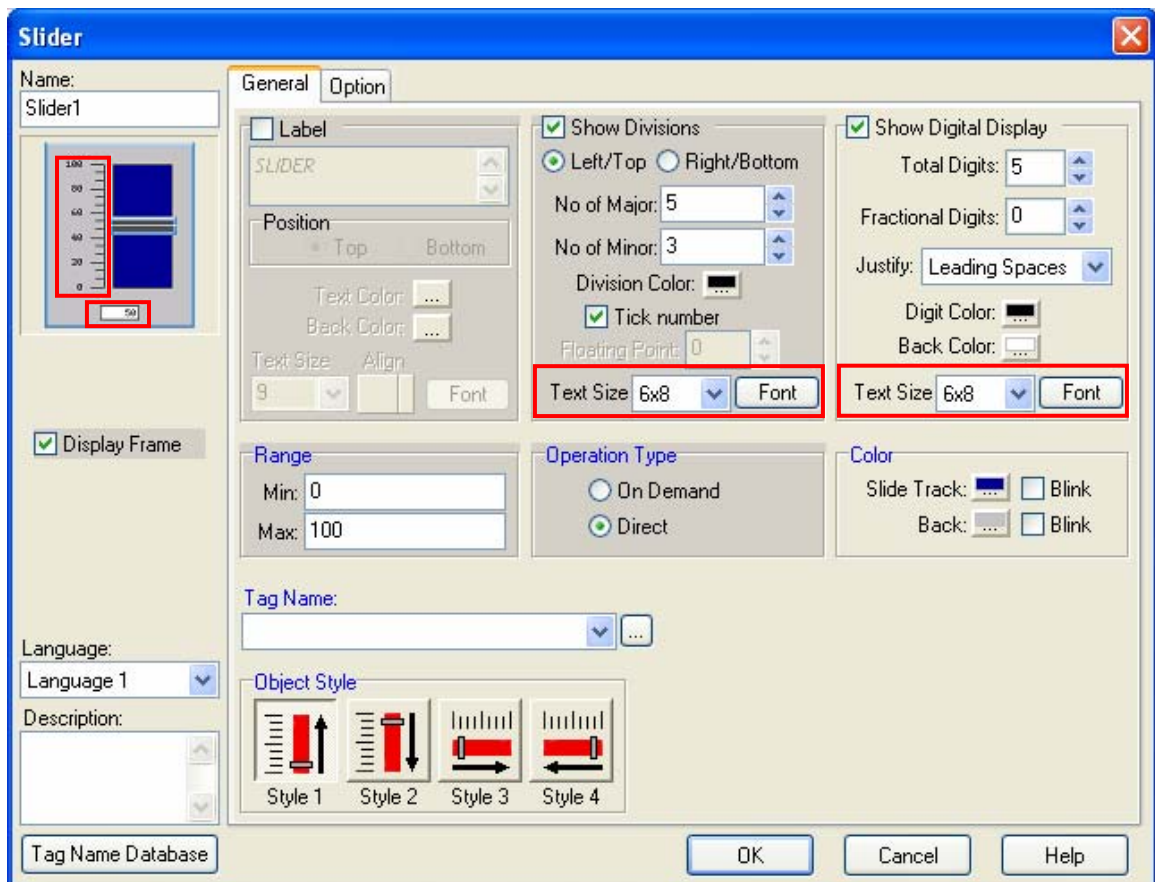
Entering a value 0.00006 will be displayed as shown.



Font Selection for Slider, Bar Meter, Analog Meter and Line Trend Graph Tick Numbers and Axes Added

Previous versions of the C-more software did not have the ability to change the font for Tick Numbers, Digital Displays and Trend Axes.

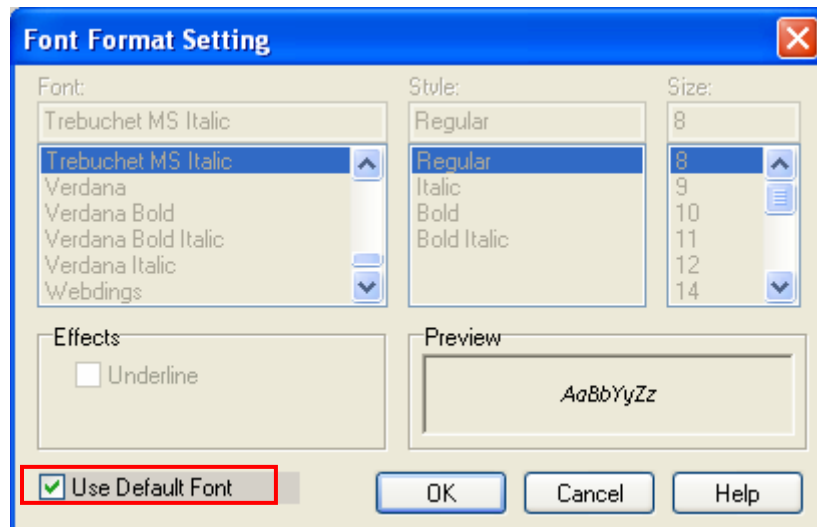
These fonts can now be changed as shown in the Slider example shown below.



Default Font

The default font select is Classic 6x8 because this matches the font in previous versions.

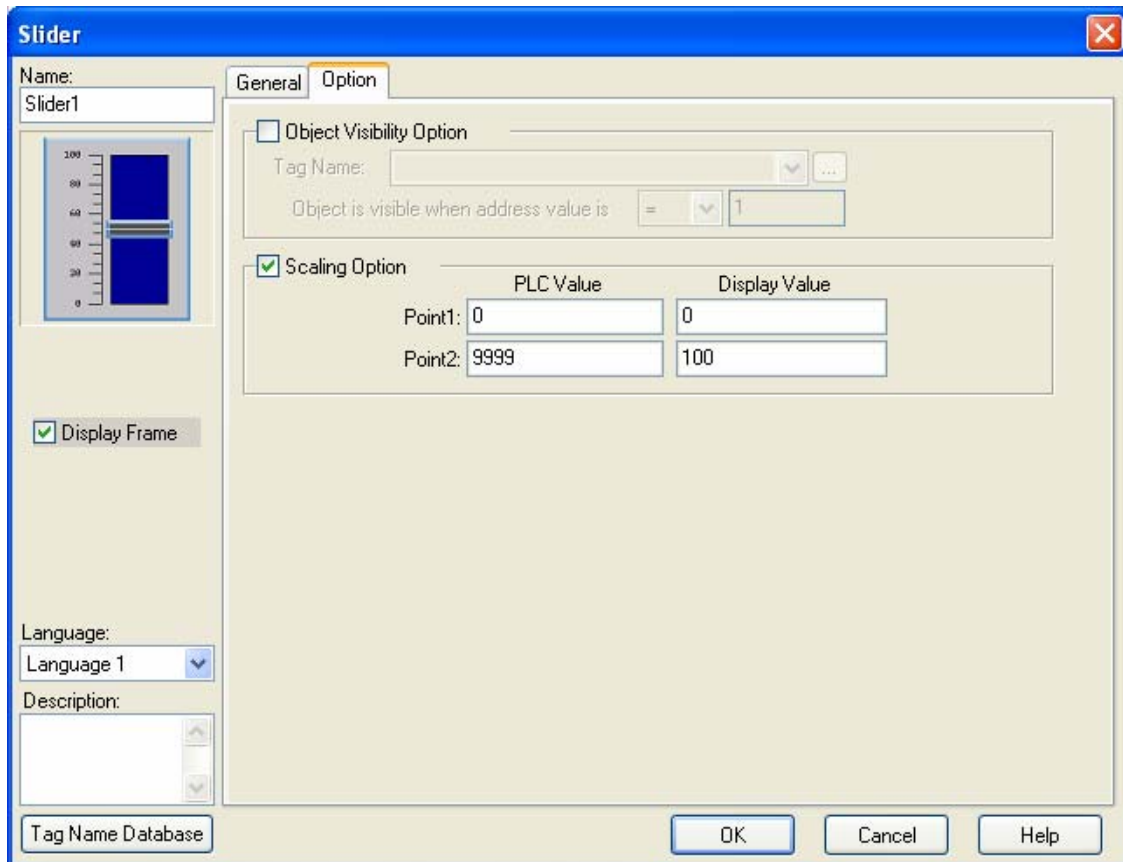
To change the default font to the Project default font, select the Font button. The window below opens. Check the *Use Default Font* checkbox. Or select another font if desired.



Slider Object Scaling Added

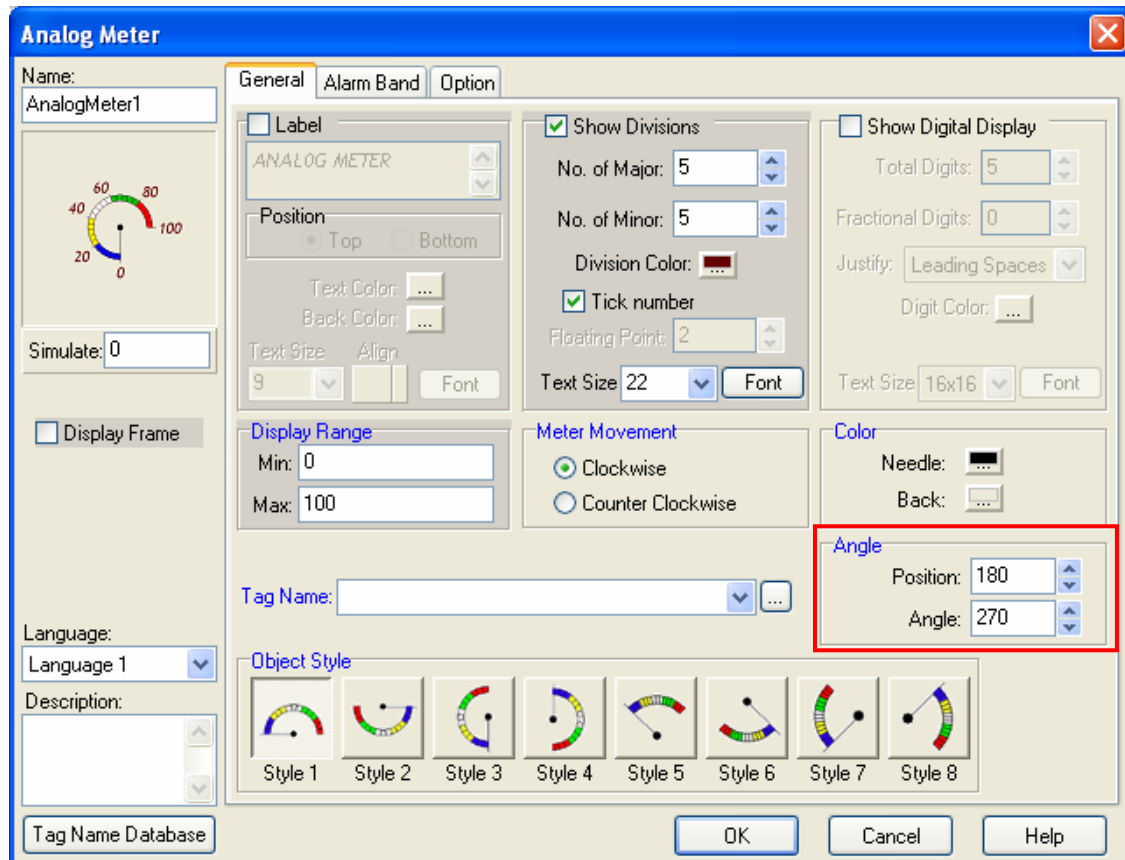
The Scaling Option can be found under the Option Tab of the Slider Object Dialog Box.

In the example below, the PLC Values 0 to 9999 will be scaled to Display as 0 to 100.



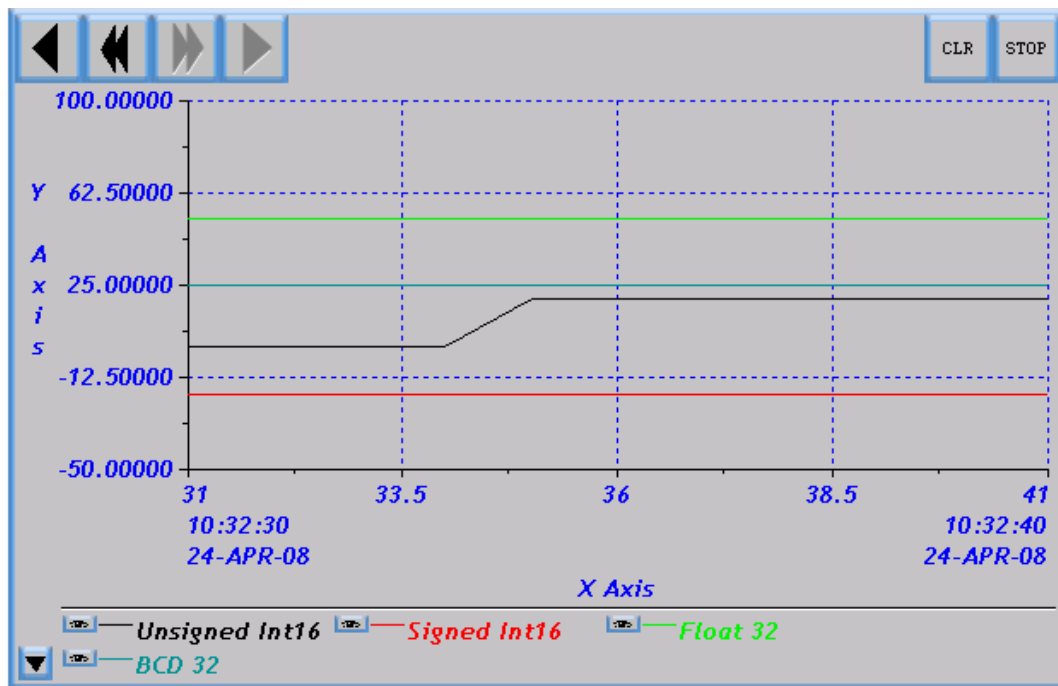
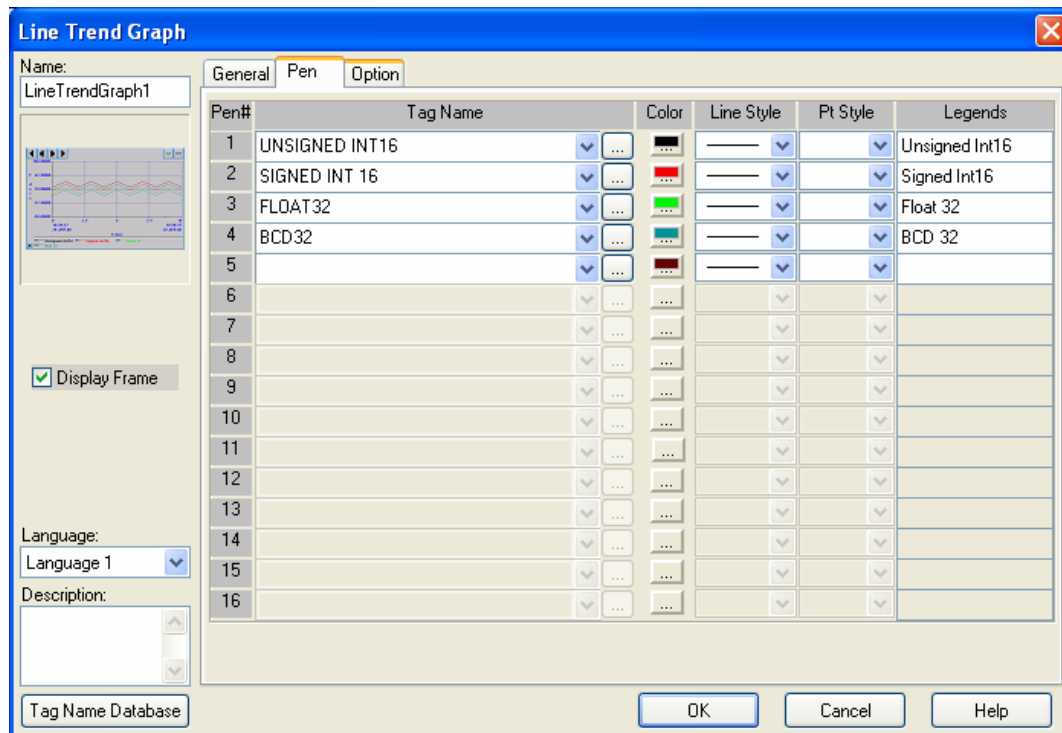
Analog Meter – Position and Angle Entries Added

The Analog Meter by default offers 8 styles with various preset angular positions and angular movements. To change the position and angle, simple enter different values in to the Position and Angle parameters. The Position can be set from 0 – 360 degrees. The Angle can be set from 1 – 360 degrees.



Line Trend Graph – Pens can now be used with Mixed Data Types

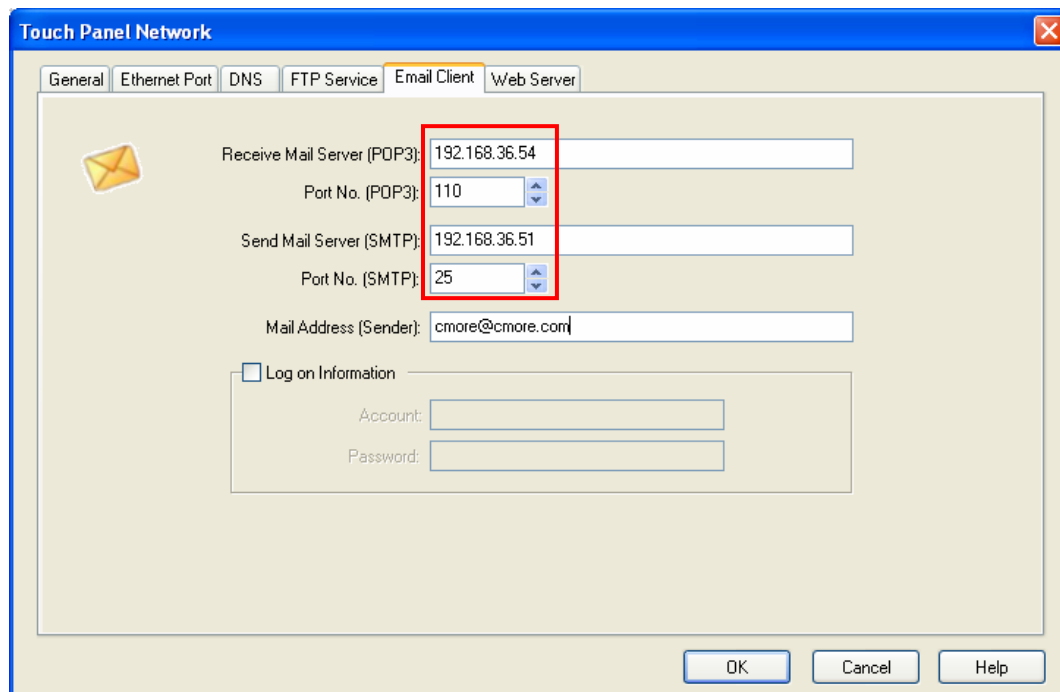
As can be seen below, the Line Trend may contain mixed data types. The pens still share the same Y-Axis Range.



Email Server Port Number Settings Added

The Email Client settings can be found in the Touch Panel Network Dialog Box under the Email Client Tab.

Some Email Servers block ports 110 and 25 to reduce spam. The SMTP and POP3 server port numbers can be adjusted to match your email provider's server ports.



The screenshot shows the 'Touch Panel Network' dialog box with the 'Email Client' tab selected. A red rectangle highlights the 'Port No. (POP3)' and 'Port No. (SMTP)' fields. The 'Receive Mail Server (POP3)' is set to '192.168.36.54' and the 'Send Mail Server (SMTP)' is set to '192.168.36.51'. The 'Mail Address (Sender)' is 'cmore@cmore.com'. The 'Log on Information' section is collapsed.

Field	Value
Receive Mail Server (POP3)	192.168.36.54
Port No. (POP3)	110
Send Mail Server (SMTP)	192.168.36.51
Port No. (SMTP)	25
Mail Address (Sender)	cmore@cmore.com

☐ Log on Information

Account:

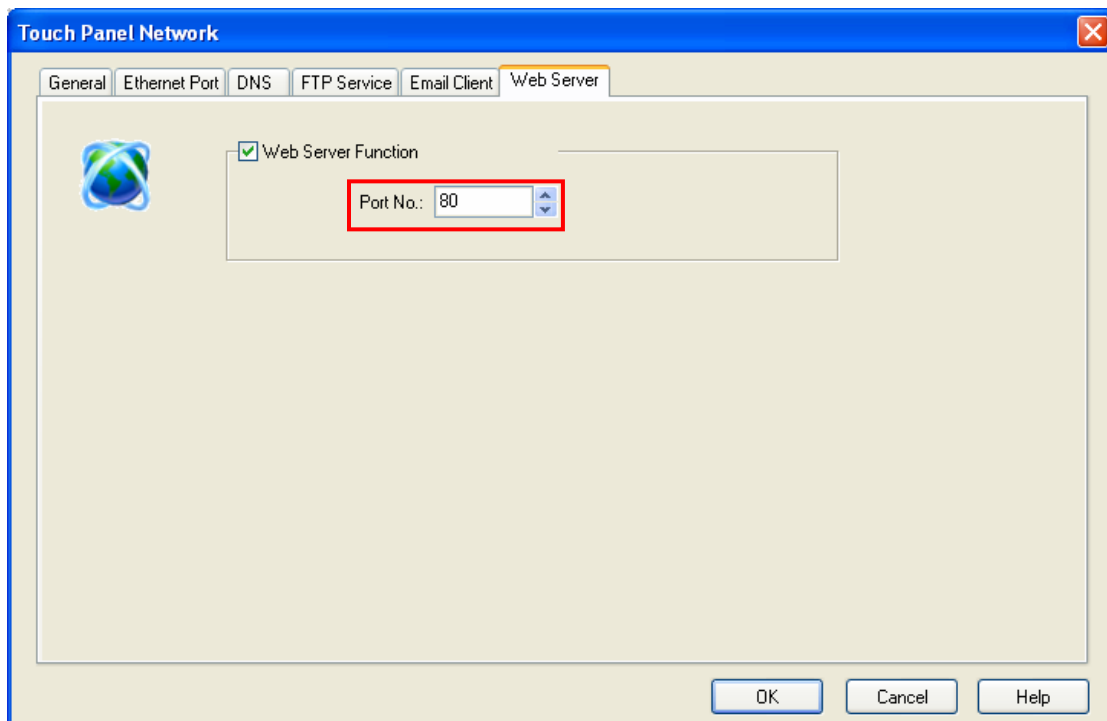
Password:

OK Cancel Help

Web Server Port Number Setting Added

The Web Server settings can be found in the Touch Panel Network Dialog Box under the Web Server Tab.

The Web Server Port Number setting may be changed to allow some flexibility when viewing the C-more Panel screens remotely.



Key Button Object – Notification and Visibility Added

Notification

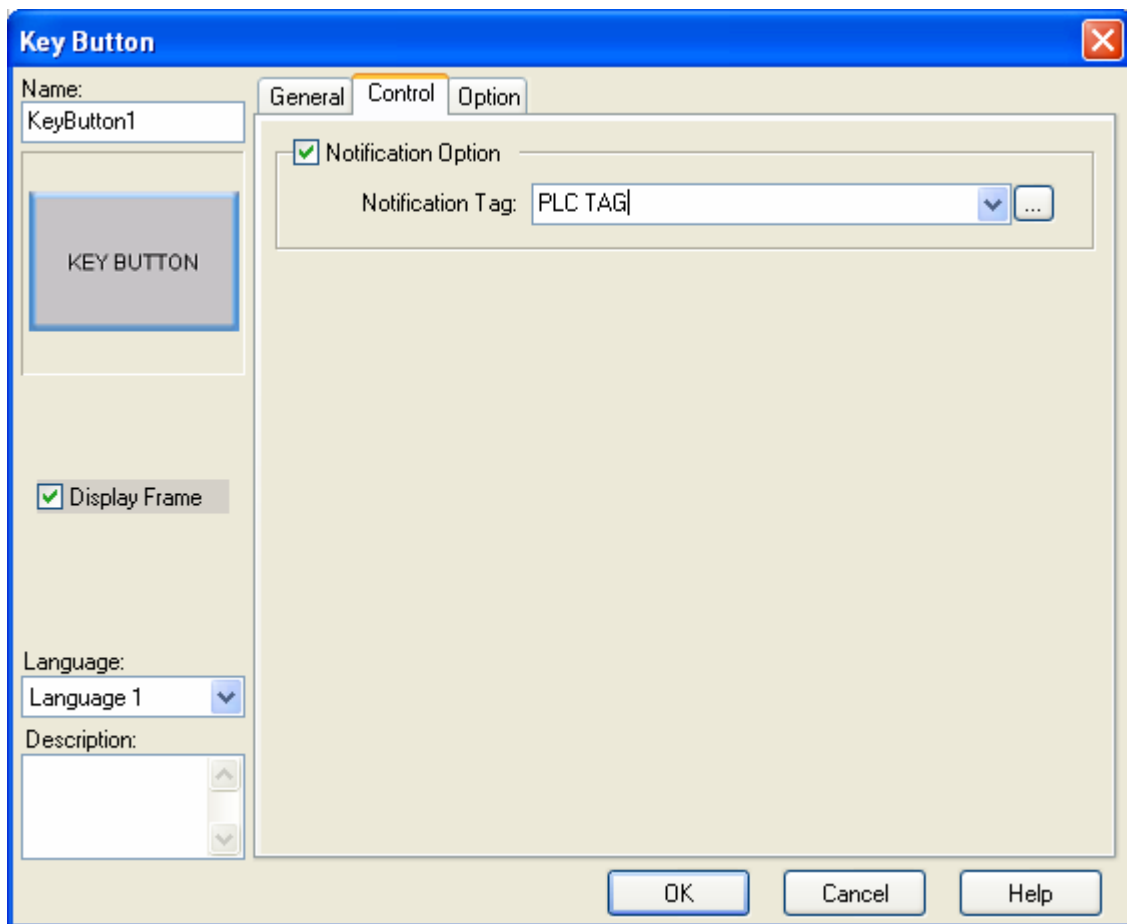
The Notification option under the Control Tab of the Key Button Object allows the notification of the Actions that the Key Button can take.

Among these are:

Calling the System Screen

Various actions associated with the Alarm History and Alarm Count

Various operations associated with User Defined Keypads

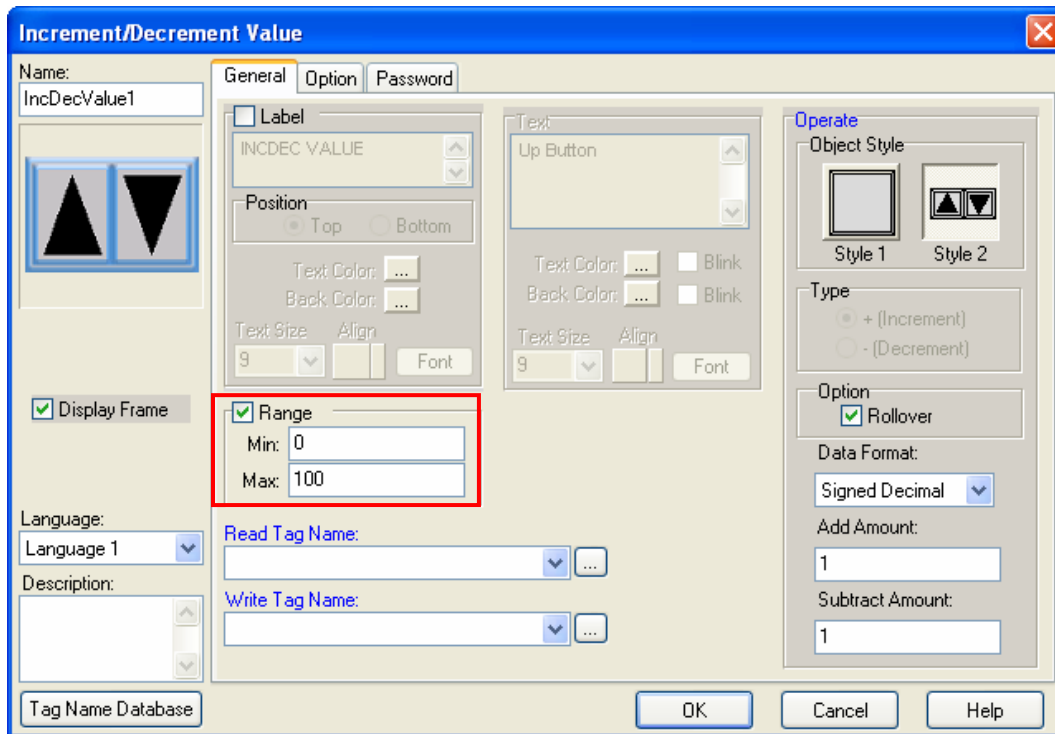


Visibility

Key Button visibility may be set under the Options tab as with the other objects.

Increment/Decrement Value Object – Range Checking Added

To limit the range of the Increment/Decrement Value object, select the Range checkbox in the General Tab and enter the desired minimum and maximum values.



String Data Type Increased from 81 characters to 128 characters

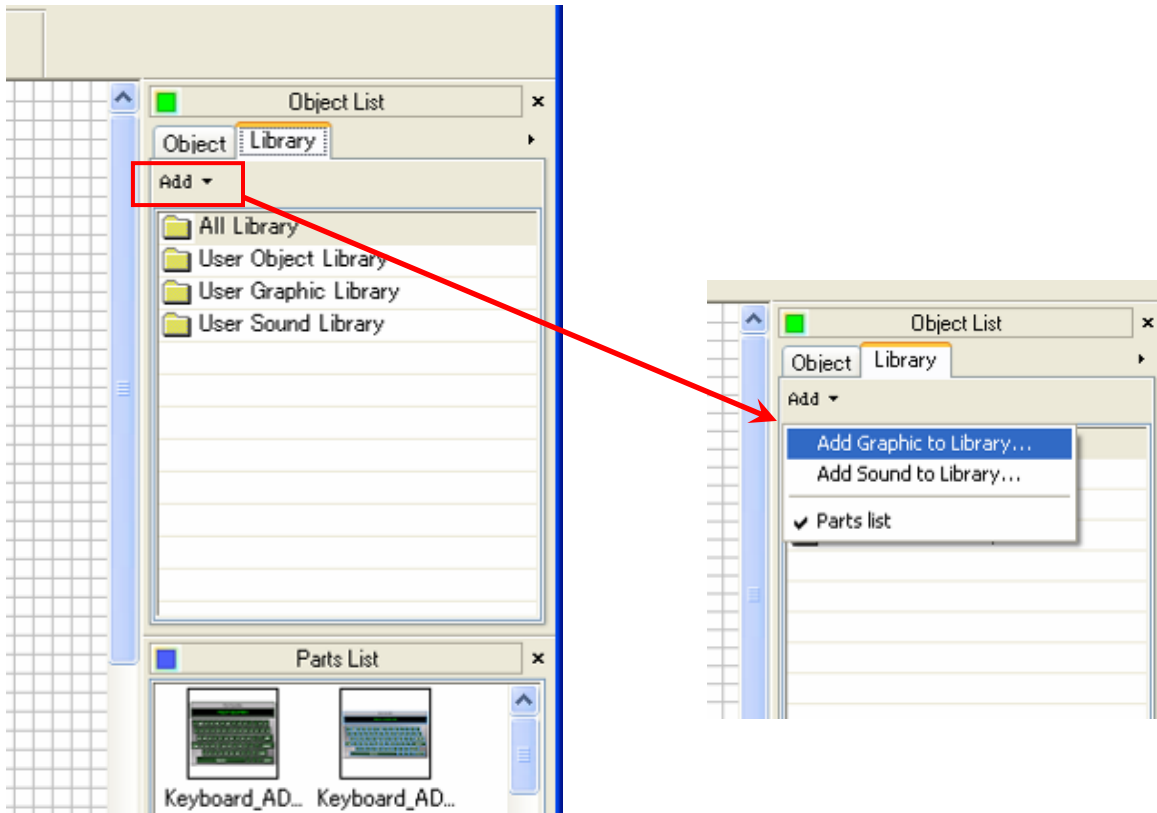
The screenshot shows a software window titled "Tag Name - Add". At the top, there is a "No." field with the value "99" and navigation buttons. Below this is the "Tag Information" section, which contains the following fields:

- "Device Name:" with a dropdown menu showing "<INTERNAL>".
- "Tag Name:" with a text input field containing "STRING".
- "Tag Data Type:" with a dropdown menu showing "Ascii String".
- "Characters:" with a spin box containing "128". This field is highlighted with a red rectangular box.
- A "Retentive" checkbox, which is currently unchecked.

Below the "Tag Information" section is the "PLC Address" section, which contains a "Memory Type" dropdown menu and an "Address" text input field. At the bottom of the window are three buttons: "Add", "Close", and "Help".

Object List Window – Library Tab – Add button for importing graphics and sounds into the User Libraries

This feature is not new, but is now easier to find. To add Graphics or Sounds to the User Graphic and Sound Libraries, click on the Add Button on the Library Tab in the Object List Window as shown below.



Known Issues

The following is a list of known issues that could not be corrected before this software release. Every effort will be made to correct these issues in the next release.

1. C-more Internal Clock – the time and date will reset itself after 49.7 days. To prevent this problem, cycle power on the panel before 49.7 days has passed since the last power cycle.
2. Entivity Modbus RTU & Modbus TCP: Software imports Strings above S-192
3. Entivity TCP and RTU: High range tags Modbus addresses not calculated correctly. With data types, Counter, Float and Number there is an expanded Modbus range added for Studio 7.2 and LIVE 5.6. With Counters above C-2047, This is true for Floats and Numbers above FP-1023 and N-1023.
4. Event Manager - Sound Action Problem – there are situations in which sounds may not play properly.
5. Tag Database for all protocols: The software does not cross check objects assigned to tags for Read/Write properties. Panel will attempt to write to Read Only Addresses.
6. Project Import from a project created earlier than Version 2.1 will crash the Software.
7. Call Recipe – If Cell is configured for ASCII Value, then cell is edited and data is deleted, cell can not be edited any longer.
8. Key Button Notification not working
9. Screen Saver - External Clock Source prevents Screen saver from activating at its specified time.
10. Project Transfer and Firmware Update using a USB Pen Drive from firmware version 2.0.7.35 to version 2.1 causes a Checksum error when panel initial boots. After selecting OK, panel run as expected.]\
11. EtherNet/IP Tag Based: C-more not requesting Float Array tags correctly. Only first tag is being requested.
12. Screen Library - Screens can not be saved to the Screen Library with Lines and rectangles.

13. Screen Selector object with popup option gets corrupted from earlier version to Ver. 2.1 and causes project to crash – EA-RUN.EXE Runtime Error
14. Alarm History – Alarm active when power is lost can not be cleared
15. Bar Meter – Object with Meter and Background images causes Panel to get EA-RUN.EXE Runtime Error or White Screen
16. Grounding Issue with EA-AC power Supply causes panel to freeze – power cycle required.
17. Screen Capture event causes an RTE-012 error if Log folder does not exist in Panel.
18. Line Object disappears when screen size is reduced.